

# Model: LK2240

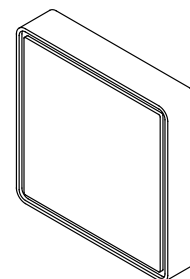
## Square LED Ceiling / Wall Lighting Fixture

### Installation Instructions



#### IMPORTANT:

- Wall or Ceiling mount only.
- Before commencing installation Isolate all cables at the point of installation from the building Supply Mains.
- Installation by a Registered Electrician is recommended.
- Choose the mounting position carefully taking into account the fixing method, the services behind the wall and the IP rating required for that position.



Disassemble the lighting fixture by removing the 4 diffuser screws.

Detach the LED lamp plate by removing 4 screws..

With the supply cable through the grommet in the base, fix the base to the mounting surface using at least 2 screws, 4 holes are provided.

To maintain the IP rating ensure that the cable entry is sealed.

Do Not damage the LED unit or disassemble the Electronic Driver –

No user serviceable parts are inside.

Connect the Supply Cable to the terminal block on the base plate.

Connect the Neutral wire to the N Terminal.

Connect the Phase wire to the L Terminal.

- **Reassemble the LED lamp onto the Base and Clip the white reflector into place.**
- Reassemble the diffuser onto the base.
- Finally Clip the Colour cover Ring over the base assembly.

---

**!!! Please leave this page with the installation.**

---

**NOTE:** This LED Luminaire does not have a replaceable Lamp or serviceable parts.

**Do Not Open.**

Consult a Registered Electrician.