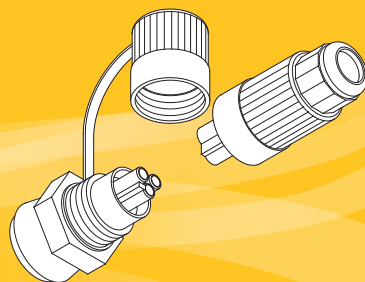
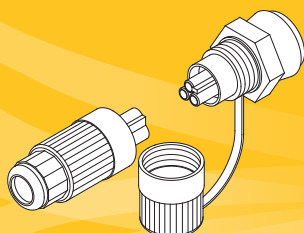




Model: **JT13-512PE**  
**IP68 Panel mount plug  
and socket with cap**  
– **Blind mount**  
Mounts into 25.5 – 26mm Ø hole



**superlux**  
we engineer light



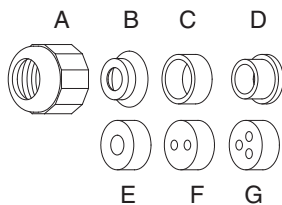
**superlux**  
we engineer light

Model: **JT13-512PE**

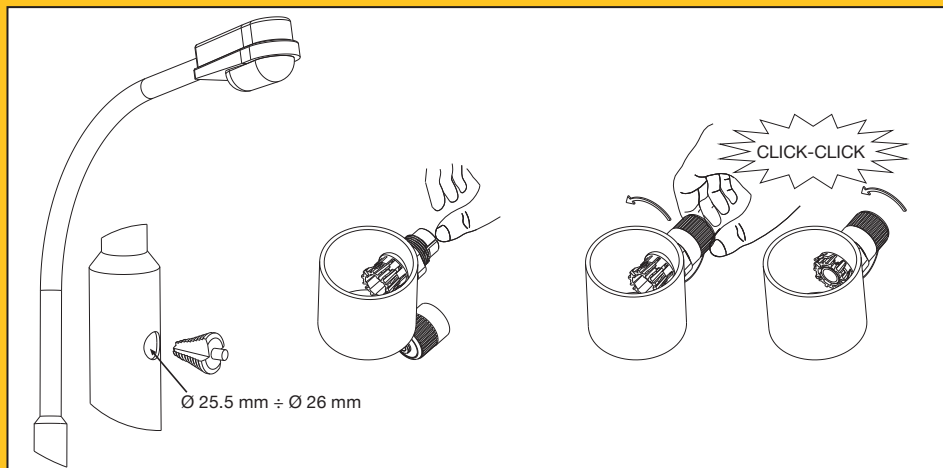
### Product Uses:

- Plug and socket for easy and quick cable connection.
- Use in temporary situations or where maintenance is required.
- Blind mount expander mechanism requires no need to access the back of the panel.
- Will fix to uneven/curved mounting surfaces.
- Includes closing cap for unused socket.

No Poles	mm <sup>2</sup>	Cable range Ø	IP
3	4	5mm-12mm	68



**A** = Gland Nut  
**B** = Use with grommets to assist with cables 7mm Ø and smaller  
**C** = For cables 9 -12mm Ø  
**C + D** = For cables 7- 9mm Ø  
**E** = Cable maximum 5.5mm Ø  
**F** = 2 holes maximum 3.5mm Ø  
**G** = 3 holes maximum 3.5mm Ø



Manufactured in Italy